

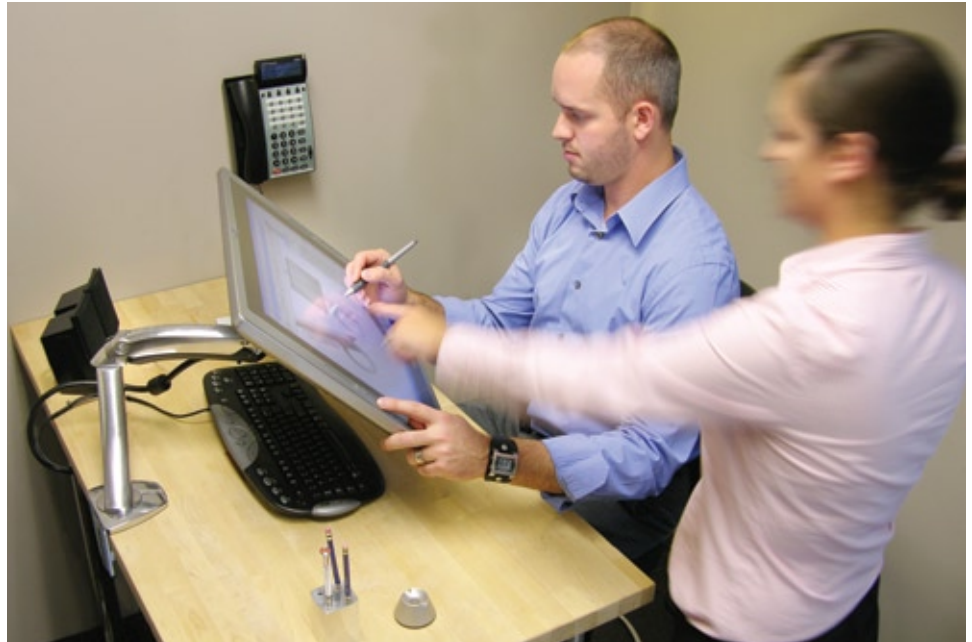
Highlights

- Accommodates mid-sized displays and all-in-one computers weighing up to 30 lbs (13.6 kg)
- Position your display for maximum ergonomic comfort to relieve eye, neck and back strain
- Cable management feature conceals and routes cables under the arm, out of the way
- Free up your table or desktop to increase your workspace
- Upgrade LCD monitors and TVs with improved ergonomic adjustment
- Pre-assembled arm offers monitor/TV theft deterrence
- Extends/retracts LCD up to 16.7" (42 cm); push your display out of the way when not in use
- Patented CF motion technology provides premium ease-of-use display adjustment.
- Easy-to-use, simple installation and effortless operation



Ergotron®

MX LCD Arms



Affordable elegance and adjustability for mid-sized displays

Exceptional engineering and design makes the new Ergotron MX LCD Arm the right solution for today's mid-sized desktop displays and all-in-one computers weighing up to 30 lbs (13.2 kg). Combining premium features with an attractive, polished aluminum finish, the MX Arm offers a slim profile, five inches (13 cm) of height adjustment, integrated tilt, portrait-to-landscape capability and 360° rotation—all on a convenient swivel base. Gain comfort and productivity with this stylish and affordable desk mount display.



- Patented Constant Force (CF) lift-and-pivot motion technology
- Portrait/landscape rotation includes position lock
- Desk mounting options: desk clamp attaches to surface edge 0–2.6" (0–66 mm) thick; grommet mount attaches through surface holes .31–2" (8–51 mm) wide and up to 3" (80 mm) thick
- Mounting standards: VESA FDMI, MIS-D, 75/100, C (hole patterns = 100 x 100 mm and 75 x 75 mm). Optional VESA Bracket Adaptor Kit (97-474) can be ordered separately for MIS-E and MIS-F interfaces (hole patterns = 200 x 100 mm, 200 x 200 mm and 400 x 200 mm)
- Weight capacity: 14–30 lbs (6.3–13.6 kg)
- 16.7" (42 cm) extend/retract motion
- Cable management feature conceals and routes cables under the arm, out of the way
- Pans at base 180°; rotates at extension 360°; pans at monitor 180°
- Rotate screen for portrait viewing of photos and pages—eliminate scrolling
- Warranty: five (5) years

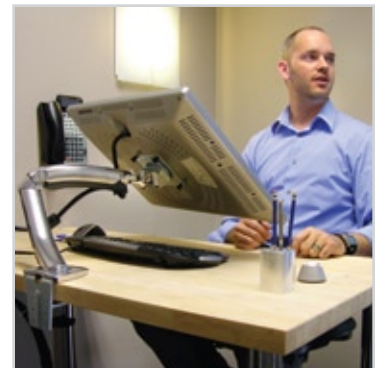


| LCD Size | LCD Weight* | Lift | Tilt | Pan | Rotation** | VESA |
|----------|--------------------------|-------------|------|------|------------|-------|
| ≤ 30" | 14–30 lbs 6,3–13,6 kg | 5" 13 cm | 80° | 180° | 90° w/lock | MIS-D |

* Monitor depth greater than 4" (102 mm) may diminish capacity. Contact Ergotron for more information

** Portrait mode is incompatible with 30" displays on Desk Mount Arm

Motion range may be limited when using larger displays and/or by the position of the VESA hole pattern on the back of the display



| Product Name | MX Desk Mount LCD Arm | MX Wall Mount LCD Arm |
|-----------------------|---|---|
| Part Number | 45-214-026 (polished aluminum) | 45-228-026 (polished aluminum) |
| Product Includes | MX Desk Mount Arm, desk clamp and grommet mount | MX Wall Mount Arm |
| Shipping Dimensions | 25.6" x 7.3" x 6.3" (650 x 185 x 160 mm) LWH | 29.25" x 10.5" x 6.5" (745 x 265 x 160 mm) LWH |
| Shipping Weight | 9 lbs (4.2 kg) | 10.25 lbs (4.65 kg) |
| Warranty | 5 years | |
| Weight Capacity | 14–30 lbs (6.3–13.6 kg) | |
| Compatible Display(s) | Most VESA-compliant monitors/HDTV displays up to 30" diagonal in size | |

© 2009 Ergotron, Inc. rev. 04/27/2009 870-05-084-EA Content is subject to change without notification

Americas Sales and Corporate Headquarters

St. Paul, MN USA
(800) 888-8458
+1-651-681-7600
www.ergotron.com
sales@ergotron.com

EMEA Sales

Amersfoort, The Netherlands
+31 33 45 45 600
www.ergotron.com
info.eu@ergotron.com

APAC Sales

Tokyo, Japan
www.ergotron.com
info.apac@ergotron.com

Worldwide OEM Sales

www.ergotron.com
info.oem@ergotron.com

